

**Secure  
your world  
under lock**



**and  
controlled  
access.**

**Built to be  
unbreakable.**

**Coded to be  
uncrackable.**



## Why are you securing your world with a technology that's 6000 years old?



Inigma is a smart wireless access control system using bluetooth communication. Control access to your locks and smart keys via the inigma app, using your phone, tablet or pc. The easy to use system operates on both Android and Apple iOS devices. Control which locks users can open and when, see a comprehensive audit trail and easily give and revoke access.

Inigma uses secure AES-256-bit end to end encryption. It can open 1000's of locks and can store audit records for 1000's of lock visits. The software was developed by Squire Locks - lock makers since 1780 and comes with UK based support.

Inigma is low cost and easy to install - no hard wiring required or expensive authorisers and comes with the highest level of accreditation.



The logo features the word "SQUIRE" in a white, uppercase, sans-serif font. Above the letters "I" and "R" is a white, semi-circular arc. Below "SQUIRE" is the word "inigma" in a white, lowercase, sans-serif font. The background is a dark blue gradient with faint, vertical columns of binary code (0s and 1s) in a lighter blue color.

**SQUIRE**  
**inigma**

# key features



Full audit trail



AES 256 Encryption



Automatic blacklist for stolen keys



Wire free access control



Programmable locks and keys

1011100  
001101  
0100

Time and date restricted access



Wide range of locks





# inigma - the system

## What is inigma?

- Smart wireless access control from a secure cloud server to smart locks via a smart key using Bluetooth BLE communication.
- Control access to smart keys and locks via your smart phone.
- One key fits all locks.
- Secure AES-256-bit end to end encryption.
- System administrator controls access for users.
- Flexible scheduling for user groups.
- The inigma app communicates with your smart key.

## A proprietary system

- Designed by Squire with UK based support.
- Easy to use interface.
- Android & Apple iOS compatible.
- Comprehensive audit trail of locks visited.
- Enterprise software controls smart key users.
- Control which locks smart key users can open & when.
- Convenient, secure access control for remote locations for one to many thousands of users.
- Easy programming of inigma locks and smart keys.
- The app can also be used to operate inigma bicycle locks.

## Smartkey

- Bluetooth connection to smart phone (Apple iOS and Android).
- Can open 1000's of locks.
- Can store audit records for 1000's of lock visits.
- Lost/stolen smart keys can be deleted.
- Multifunction LED (green/red/orange) with low charge indicator.
- Rechargeable smart key - only need to recharge every three to four months with normal usage.

## Features

- The lock (not the key or the smart phone) makes the unlocking decision.
- Ad hoc access on-the-fly for remote users.
- All user needs is smart key and smart phone.
- User friendly and simple to use.
- Easy to give and revoke access.
- No need to visit wall authoriser to sync smart key.
- Highest level of accreditation for padlocks and cylinders.
- Low cost and easy to install - no hard wiring required or expensive authorisers.



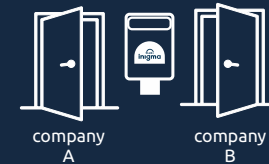
# advanced features



## inter-operability

This feature allows the integration of two or more inigma systems into one. It means that other locks on a separate system (or company) can be incorporated into an existing system.

**For example** - two different companies use the inigma key system. An employee who works for BOTH companies can use the same inigma key for both companies. No need for separate keys to be issued and no compromise on security.



## delegation

This feature allows the owner of the inigma system to delegate to others the ability to set certain controls and parameters.

**For example** - an inigma senior administrator within an organisation delegates certain inigma devices to a trusted colleague. They can revoke the delegation at any time they choose.



## roles

The owner of the inigma system can create time schedules to access locks for office staff, factory staff or cleaners. And this can include temporary time limited access rights for contractors.

**For example** - an administrator may set up a new 'role', such as 'cleaners'. Cleaners would be allowed access to all locks in a building, but only during their shift hours. If a new cleaner requires a key, that key can simply be assigned the role of 'cleaner' automatically, defining its access rights.



## zones

The user has the ability to group locks into 'zones' to save time on setup and permission changing. A specific area or floor of a building can be set up as a zone, which can then be used alongside schedules and roles.

**For example** - a multi-story hotel employing room cleaners may wish to set up three floors of the building as a zone. The cleaners tasked with cleaning those floors hold keys for access only to the 3 floor zone, but not to other areas of the building.



---

## viral messaging

Messages can be communicated virally across the system (virally meaning key to lock/lock to key communication). This feature negates the need for an individual administrator to visit locks to update permissions.

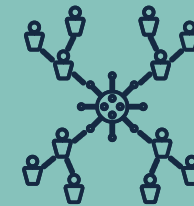
**For example** – blacklisting a lost or stolen key in the system immediately revokes its permissions and rights and this is communicated to all other key holders within the system when they sync. The information is then communicated to all other locks on the system as the keys are presented. If the lost or stolen key is presented, the access rights would be declined.



---

## validation

This feature has unique advantages over other electronic key systems. When the user assigns access rights to a key, they can also assign validation periods. The key can be validated from the phone, on the fly and without the server being available. This means validity periods can be minimal – hours instead of days, weeks or even months, which dramatically increases security and is much less hassle for the user. When the validation period expires, the key can be re-validated easily by simply synchronising with the phone.



## advanced features continued

---

### automatic blacklisting

An administrator can revoke permissions at any time. As soon as a key loses permission to open a lock, it automatically becomes blacklisted. As soon as a key regains permission, it becomes un-blacklisted.

**For example** - if an employee leaves a company, taking their key and not returning it. The administrator can instantly revoke all permissions and re-validation of that key would not be permitted if the former employee attempted to use it.

---

### access rights controlled by the lock not the key

The lock makes the decision to unlock based on a request received by a key. The key does not tell the lock to open.

**For example** - a key is stolen by criminals to attempt to decrypt information held within the key. This attempt is futile as the key holds no data.

---

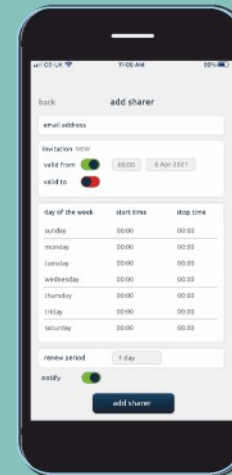
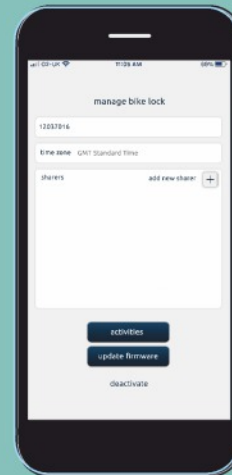
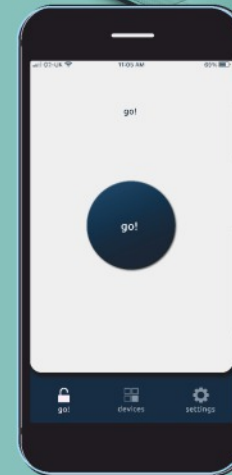
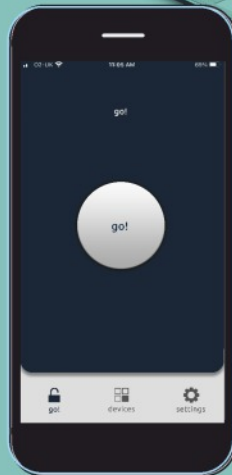
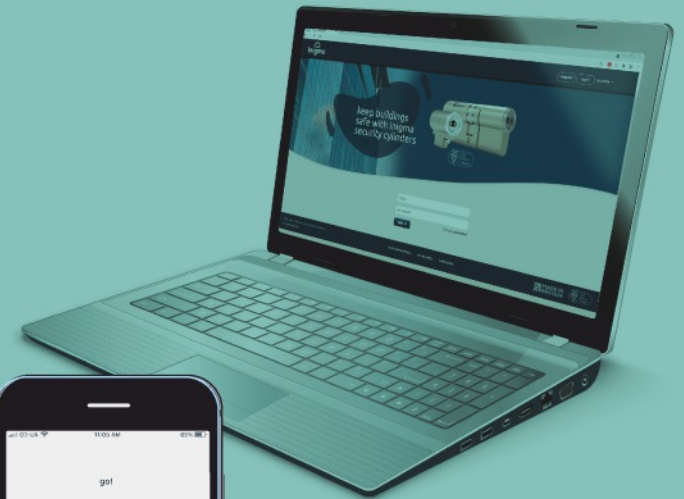
### configure your system from app or website

Configuration can be performed using the convenient app or through our website. The app works on Android and iOS devices, mobile phones and tablets. The website works in any compatible browser.

---



# updated app



# SQUIRE inigma



# A complete range of padlocks, cylinders and locksets

Inigma is available across a range of Squire products including euro cylinders and the formidable high security **Stronghold**<sup>®</sup> range of padlocks which also includes the **Stronghold**<sup>®</sup> Marine range (with a stainless steel shackle option). Inigma is now also available in the new **Stronghold**<sup>®</sup> SS100 range, the world's strongest padlock, with a 100mm wide body and 20mm diameter shackle. The SS100 incorporates two inigma cylinders for added security (See page 20 for details)

The integration with **Stronghold**<sup>®</sup> offers the added reassurance of knowing that the padlocks themselves have been tested in house to prove that they can withstand the harshest of attack, plus the **Stronghold**<sup>®</sup> range has the added benefit of being CEN tested and approved\*.

**Stronghold**<sup>®</sup> padlocks come in a wide range of body widths and shackle types (including boron and stainless steel) and include the tough all-weather cover for added protection against the elements.\*\*

In many cases, inigma cylinders can be retrofitted into mechanical **Stronghold**<sup>®</sup> padlocks. Squire can offer advice and assistance on retrofitting.

\* The Stronghold<sup>®</sup> SS45 is not CEN Approved.

\*\* The Stronghold<sup>®</sup> WS75 does not have a weatherproof cover.



TRANSPORT

CONTAINERS

OIL AND GAS

POWER PLANTS

INFRASTRUCTURE

WATER UTILITIES

MOBILE PHONE MASTS

PERIMETER GATES

CONSTRUCTION

RETAIL

FARMING AND AGRICULTURE

# inigma Stronghold<sup>®</sup> padlock range



- Solid hardened steel lock body.
- Electrophoretic anti-corrosion finish.
- Hardened boron alloy steel shackle.
- Anti-drill protection for extra security.
- Extra high security.
- Highly corrosion resistant - over 400-hours salt spray test.
- Suitable for harsh environments.
- Comes in a range of sizes and shackle variants.
- Can record 1000's of visits by smart key users.



**ACCESS CONTROLS**  
This feature empowers you with the ability to control access to your data and applications. You can define access policies based on user roles, zones, and other attributes. This allows you to restrict access to specific data and applications based on your security requirements.

**INTER-OPERABILITY**  
This feature allows the integration of your existing systems and applications with the Squire Inigma platform. This enables you to leverage your existing investments and data while benefiting from the advanced capabilities of the Squire Inigma ecosystem.

**DELEGATION**  
This feature allows the delegation of the Squire Inigma platform to other users or systems. This enables you to share your data and applications with other users or systems, while maintaining control over access and security.

**ROLES**  
The owner of the Squire Inigma platform can create one or more roles to define the permissions and capabilities of users or systems. Roles can be assigned to specific users or systems, allowing you to control access to your data and applications based on their role.

**ZONES**  
The user has the ability to group data into zones to represent different areas of focus or business units. A zone can be defined based on specific data or applications, and access to the zone can be controlled based on user roles and permissions.



**ZONE 1**  
87764



OFFICES

SUBSTATIONS

MOBILE BUILDINGS

MODULAR BUILDINGS

DATA STORAGE CABINETS

ELECTRICITY PANELS

STUDENT ACCOMMODATION

HEALTHCARE

MEDICAL CABINETS

# inigma security cylinders



- Available as double Euro profile and Kik cylinders.
- Rechargeable keys via separate USB key charger.
- Low warning indicator light on key.
- Cost effective and easy to fit.
- Snapsafe and Anti-drill.
- Electronics are located on inside of door for extra protection.
- Half euro, camlock, and oval cylinders available.
- Wireless and no batteries are required.

# Stronghold<sup>®</sup> SS100<sup>NEW</sup>



**The world's  
strongest padlock**

## These super-heavyweight padlocks are the newest addition to the Stronghold® range.

### Features

- 100mm wide solid hardened steel lock body
- Open and closed shackle versions
- 20mm diameter hardened boron alloy steel flying shackle (shackle is not retained in lock body)
- Squire Security Rated 10, Accredited CEN6 & LPCB SR4 (Cat D level tools)
- Dual key operated
- Can be programmed to opened either by one user (with a single key), or by two users with two separate keys where supervised access is a requirement
- Anti-drill protection
- Electrophoretic anti-corrosion finish
- Protective dust cover
- Tensile pull tested to 24 tonnes (independently verified)
- Ideal for use with the STH100 padbar
- Made in Britain



Certified to  
LPS 1654: Issue 1  
Security Rating 4  
Cert. No. 1179a/04





**inigma**

**Stronghold<sup>®</sup> SS100<sup>NEW</sup>**

## dual key system - ideal for supervised access

### How to use



For single key use, the key is inserted into the left hand cylinder key way and rotated by 90 degrees. The key is then retracted and inserted into the right hand cylinder key way and rotated by 90 degrees.

The right hand key is retained in the key way the lock can be opened.

This process is reversed to lock the padlock.

### Dual key, two operatives, supervised access

For dual key use, the process is the same except that two separate keys are used. Both keys must be present to open the lock. One key is assigned to the left hand key way and removed once turned 90 degrees, the second key is assigned to the right hand keyway and is left inserted into the key way in order to open the lock.

### STH100 padbar

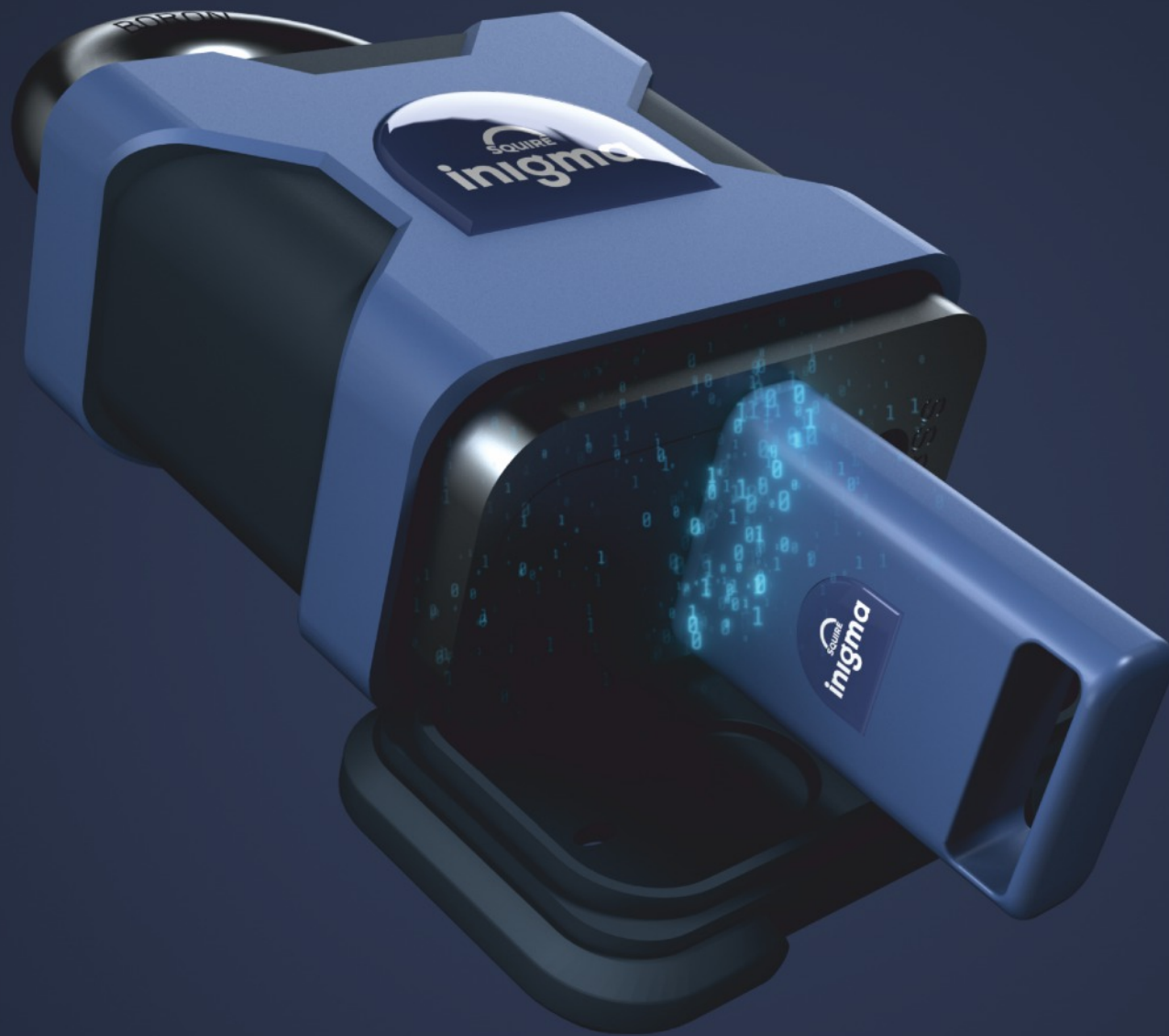


Hardened



CEN approved  
Grades 3-6

- High security padbar with hardened hasp and staple
- Hardened special cast material - extremely strong
- Hardened rotating stud for extra resistance to attack
- For use only with the SS100CS padlock.





Certified to  
LPS 1654: Issue 1  
Security Rating 4  
Cert. No. 1179a/04



## inigma Stronghold® SS100

Body width	100mm
Shackle diameter	20mm
Shackle Variants	Open, closed
LPCB	SR4
CEN	6
Security rating	10



Certified to  
LPS 1654: Issue 1  
Security Rating 3  
Cert. No. 1179a/01



## inigma Stronghold® SS80

Body width	80mm
Shackle diameter	16mm
Shackle Variants	Open, closed
LPCB	SR3
CEN	6
Security rating	10



Certified to  
LPS 1654: Issue 1  
Security Rating 2  
Cert. No. 1179a/01



## inigma Stronghold® SS65 (and SS65 LEV3)

Body width	65mm
Shackle diameter	12.7mm
Shackle Variants	Open, closed, long
LPCB	SR3 (SS65LEV3 only)
CEN	5-6
Security rating	10

The SS65 can be provided as an LPCB SR3 product. Customers requiring LPCB should ask for the SS65 LEV3 when ordering

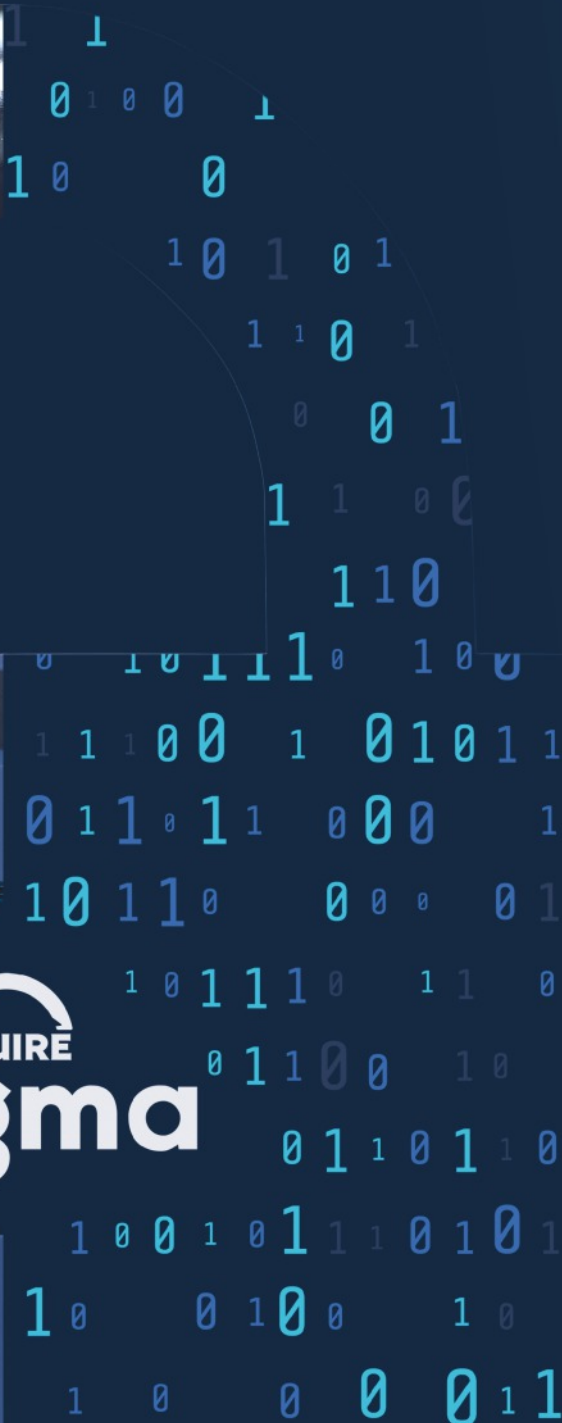
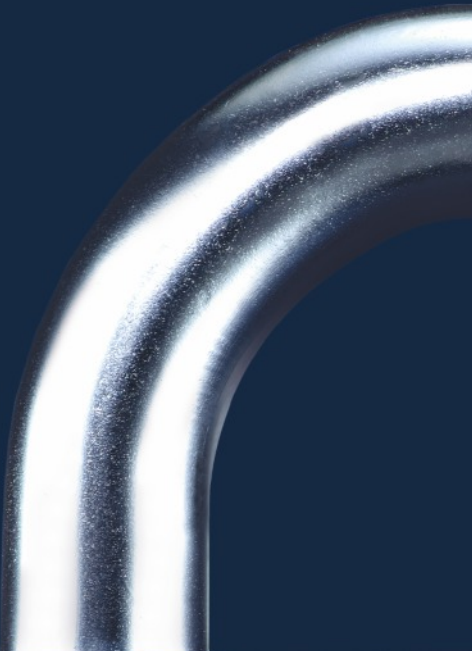


Certified to  
LPS 1654: Issue 1  
Security Rating 2  
Cert. No. 1179a/01



## inigma Stronghold® SS50

Body width	50mm
Shackle diameter	10mm
Shackle Variants	Open, closed, long
LPCB	SR2
CEN	4
Security rating	9



**inigma**  
**Stronghold®**  
SS50 Marine  
(stainless steel shackles)

Body width	50mm
Shackle diameter	10mm
Shackle Variants	Open, closed, long
CEN	3
Security rating	8





## inigma Stronghold® SS45

Body width	45mm
Shackle diameter	6mm
Shackle Variants	Open
CEN	No
Security rating	7

## inigma Stronghold® WS75 container lock (stainless steel shackles)



Body width	75mm
Shackle diameter	12mm
Shackle Variants	Open
CEN	4
Security rating	9



## inigma Stronghold® Security cylinders

inigma Stronghold® Europrofile Cylinder

### Knob turn cylinder

Inigma KC7 Cylinder	36/36
---------------------	-------

### Double euro cylinders

Inigma DC10 Cylinder	36/36
Inigma DC12 Cylinder	36/46
Inigma DC16 Cylinder	41/41

### Half euro cylinders

Inigma HC2 Cylinder	45mm
---------------------	------

### Scandinavian oval cylinders

Inigma Scan Oval Outer	L: 39.5 x H: 31mm
Inigma Scan Oval Inner	L: 39.5 x H: 31mm

### Cylinders for padlocks

KIK Cylinder for padlocks	35mm
---------------------------	------

CODES, A.B.C. 5<sup>TH</sup> EDITION. BENTLEY'S.  
CABLES AND TELEGRAMS, "TELESCOPE" BLOXWICH.  
TELEPHONE WORKS, 7 BLOXWICH.  
LONDON, MOUNTVIEW 1994.

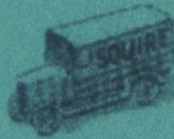
ON ADMIRALTY LIST, WAR OFFICE, INDIA OFFICE AND H. M. OFFICE OF WORKS.

# HENRY SQUIRE & SONS, LTD

ESTABLISHED 1780

GENERAL LOCK MANUFACTURERS

BRASS FOUNDERS & STAMPERS



NEW INVENTION Near WOLVERHAMPTON,  
ENGLAND.



## Family Owned Independent Lockmakers Since 1780

Squire has been at the forefront of lock-making since 1780.

As an eighth generation, independently owned British manufacturer, we produce some of the most technologically advanced products in the world.

Our locks set award winning standards, offering something for everyone, at home, at work, and on the move.

Over time, the one thing that's kept us going is our ability to change with the world. We're proud of our craft and stand firmly behind our reputation for long-lasting toughness which is guaranteed.

Our inigma system is a one key fits all solution, it is designed, engineered, and made by Squire with UK based support. Just one system controls all of your doors and padlocks. All inigma products come with a 2 year guarantee and the benefit of 240 years of lockmaking expertise.

*John Squire*

John Squire, CEO  
8th generation



# Brains encased in steel.



[www.squirelocks.co.uk](http://www.squirelocks.co.uk)

Henry Squire & Sons Limited, Hilton Cross Business Park  
Cannock Road, Featherstone, Wolverhampton, WV10 7QZ

Tel: +44 (0)1902 308050

E-Mail: [info@henry-squire.co.uk](mailto:info@henry-squire.co.uk)

